

**REGIONAL SPECIALISED METEOROLOGICAL CENTRE-TROPICAL CYCLONES, NEW DELHI
TROPICAL WEATHER OUTLOOK**

DEMS-RSMC SPECIAL TROPICAL CYCLONES NEW DELHI DATED 24.11.2021

TROPICAL WEATHER OUTLOOK FOR NORTH INDIAN OCEAN (THE BAY OF BENGAL AND ARABIAN SEA) VALID FOR NEXT 120 HOURS ISSUED AT 0600 UTC OF 24.11.2021 BASED ON 0300 UTC OF 24.11.2021.

BAY OF BENGAL:

YESTERDAY'S CYCLONIC CIRCULATION OVER CENTRAL PARTS OF SOUTH BAY OF BENGAL (BOB) LAY OVER SOUTHWEST & ADJOINING SOUTHEAST BOB AND EXTENDED UPTO 4.5 KM ABOVE MEAN SEA LEVEL AT 0300 UTC OF TODAY, THE 24TH NOVEMBER, 2021. UNDER ITS INFLUENCE, A LOW PRESSURE AREA IS LIKELY TO FORM OVER SOUTHWEST BAY OF BENGAL DURING NEXT 24 HOURS. IT IS LIKELY TO MOVE WESTNORTHWESTWARDS TOWARDS SRILANKA & SOUTH TAMILNADU COAST.

SCATTERED INTENSE CONVECTION LAY OVER SOUTHWEST BAY OF BENGAL OFF EAST SRILANKA COAST & NEIGHBOURHOOD HAS SLIGHTLY INCREASED AND CONCENTRATED DURING LAST 06 HOURS. MINIMUM CLOUD TOP TEMPERATURE (CTT) IS MINUS 93°C.

SCATTERED TO BROKEN LOW AND MEDIUM CLOUDS WITH EMBEDDED INTENSE TO VERY INTENSE CONVECTION LAY OVER SOUTH BAY OF BENGAL AND MODERATE TO INTENSE CONVECTION LAY OVER ANDAMAN SEA.

PROBABILITY OF CYCLOGENESIS (FORMATION OF DEPRESSION) DURING NEXT 120 HRS:

24 HOURS	24-48 HOURS	48-72 HOURS	72-96 HOURS	96-120 HOURS
NIL	NIL	NIL	NIL	NIL

ARABIAN SEA:

SCATTERED LOW AND MEDIUM CLOUDS WITH EMBEDDED INTENSE TO VERY INTENSE CONVECTION LAY OVER SOUTHEAST ARABIAN SEA EAST OF LONG 71.0E & COMORIN AREA.

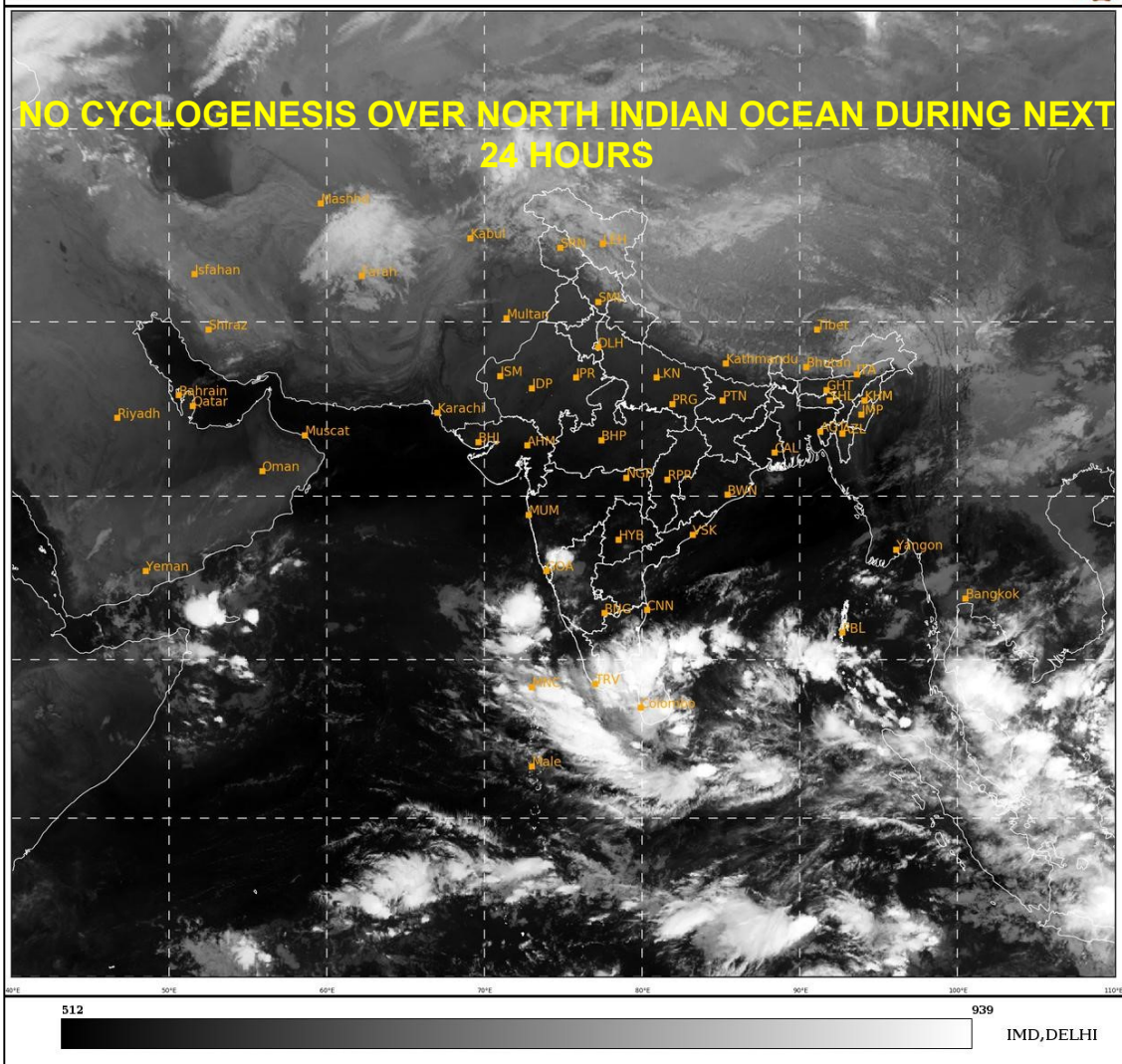
PROBABILITY OF CYCLOGENESIS (FORMATION OF DEPRESSION) DURING NEXT 120 HRS:

24 HOURS	24-48 HOURS	48-72 HOURS	72-96 HOURS	96-120 HOURS
NIL	NIL	NIL	NIL	NIL

REMARKS:

SAT : INSAT-3D IMG
IMG_TIR1 10.8 um
LIC Mercator

24-11-2021/(0300 to 0326) GMT
24-11-2021/(0830 to 0856) IST



PROBABILITY OF CYCLOGENESIS (FORMATION OF DEPRESSION):NIL: 0%, LOW: 1-25%, FAIR: 26-50%, MODERATE: 51-75% AND HIGH: 76-100%
This is a guidance Bulletin for the WMO/ESCAP Panel Member countries., Please visit respective National websites for Country specific Bulletins